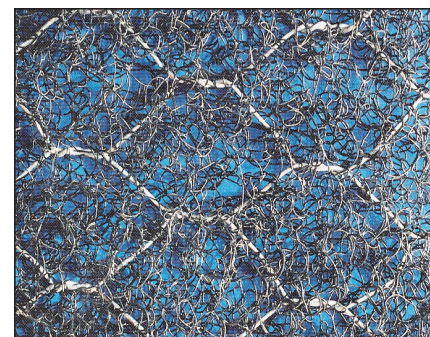


### MACMAT<sup>®</sup> R1 6822G0 TURF REINFORCEMENT MAT

**MacMat<sup>®</sup> R1 6822G0** geocomposite combines a layer of PVC coated double twisted hexagonal steel wire mesh with a polypropylene three dimensional matrix geomat that is extruded onto the wire during the manufacturing process. **MacMat<sup>®</sup> R1 6822G0** is applied as an erosion control mat for sloped embankments, for channel linings and "soil veneer applications".

Properties MAT	Test Method	Units	Values	Notes:
Polymer			polypropylene	
Mass/Unit Area	ASTM D 6566	oz/yd <sup>2</sup> (g/m <sup>2</sup> )	13.3 (450)	3
UV Stability	ASTM D G53, ASTM D 1682, mod.	% strength retained	stabilized	
Properties REINFORCEMENT				
Double twisted woven steel wire mesh heavily Galmac coated with a polymeric PVC protective layer; type			6x8	-
Minimum Weight of Coating [Galvan <sup>®</sup> ]	ASTM A856M-98	oz/yd <sup>2</sup> (g/m <sup>2</sup> )	7.19 (244)	3
Minimum Weight of Coating [PVC]	ASTM A975	mm (in)	.015 (0.38)	3
Diameter of Wire Mesh & [Galvan <sup>®</sup> & PVC]	ASTM A975	in (mm)	.086x.125 (2.2x3.2)	3
Diameter of Selvedge Wire & [Galvan <sup>®</sup> & PVC]	ASTM A975	in (mm)	.106x.145 (2.7x3.7)	3
Properties GEOCOMPOSITE				
Tensile Strength (MD)	ASTM D4595	lbs/ft (kN/m)	2143 (31.3)	1
Thickness	ASTM D 6525	mm (in)	0.47 (12)	2
Mass/Unit Area	ASTM D 6566	oz/yd <sup>2</sup> (g/m <sup>2</sup> )	54.6 (1850)	3
Ground Cover & Light penetration	ASTM D6567	%	≥65 & 30	3,4
Ability to protect soil from rain splash and associated runoff under bench-scale conditions	ECTC method 2; 6 inch (150 mm)/hr for 30 min	soil Loss ratio	> 4.4	3,4
Ability to protect soil from hydraulically-induced shear stresses under bench-scale conditions	ECTC method 3	1.98 psf for 30 min; g 3.21 psf for 30 min; g 4.31 psf for 30 min; g	< 110 < 500 < 2000	3,4
Performance in encouraging seed germination and plant growth	ECTC method 4	%	> 340	3,4
Roll info	(Width x Length) (Area x Weight)	ft (m) yd <sup>2</sup> x lb (m <sup>2</sup> x kg)	6.56x82 (2x25) 59.8x175.2 (50x95)	5

1. Minimum average roll values (MARV) are calculated as typical minus two standard deviations.
2. Minimum value
3. Typical value; on typical value a 10% of tolerance on the declared value is admitted
4. Determined on full scale tests by independent laboratories
5. Width, length, area and weight values per roll are nominal a tolerance of 5% on the reported value is admitted.



Maccaferri reserves the right to amend product specifications without notice and specifiers are requested to check as to the validity of the specifications they are using.

#### Maccaferri, Inc.

10303 Governor Lane Blvd., Williamsport, MD 21795

Tel. (800) 638-7744 - Fax (301) 223-4590

E-mail: [info@maccaferri-usa.com](mailto:info@maccaferri-usa.com) - Web site: [www.maccaferri-usa.com](http://www.maccaferri-usa.com)

#### Area Offices:

Phoenix, Arizona  
Sacramento, California  
Miami, Florida  
St. Louis, Missouri

Trenton, New Jersey  
Albuquerque, New Mexico  
Caguas, Puerto Rico  
Dallas/Ft. Worth, Texas