

MACMAT® 10.4
TURF REINFORCEMENT MAT

Product Description

MACMAT® 10.4 is a Turf Reinforcement Mat (TRM) made with continuous monofilament s fused at their intersections. The open area of the mat (90%) is sufficient for mechanical soil filling or by natural sediments through hydraulic flows. The thickness, strength, and void space of MACMAT® 10.4 permit soil filling, retention, and development of vegetation within the matrix.

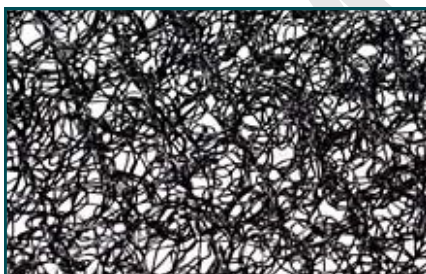
Mechanical Properties	Test Method	Units	Minimum Average Roll Values (MARV)
Tensile Strength	ASTM D 6818	kN/m (lbs/ft)	2.2 (150)
Thickness	ASTM D 6525	mm (in)	7.5 (0.3)
Mass/Unit Area	ASTM D 6566	g/m ² (oz/yd ²)	220 (6.5)
Resiliency	ASTM D 6524	%	>80
UV Stability	ASTM D 4355	% strength retained	80 @ 2000 hr

Performance Properties	Test Method	Units	Typical Roll Value
Permissible Velocity			
30 Minute, Vegetated	Flume test ¹	m/s (ft/s)	5.8 (19)
50 Hour, Vegetated	Flume test ¹	m/s (ft/s)	4.2 (14)
Permissible Shear Stress			
30 Minute, Vegetated	Flume test ¹	kN/m ² (lbs/ft ²)	0.38 (8.0)
50 Hour, Vegetated	Flume test ¹	kN/m ² (lbs/ft ²)	0.29 (6.0)
Maning's n Range²	Flume test ¹	—	0.022-0.042

1. Flume test performed at independent laboratory—data and details available upon request.

2. Depending on vegetation type and height, use engineering field experience and examine a range of Maning's n values during design.

Physical Properties	Units	Nominal Value
Roll Dimensions (Width x Length)	m (ft)	2.4 x 51.4 (8.0 x 169)
Roll Area	m ² (yd ²)	125.4 (150)
Estimated Roll Diameter	m (in)	0.6 (24)
Estimated Roll Weight	kg (lb)	34 (75)
Color		Black



For the optimization and improvement process of the technical characteristics of the products, the producer reserves the right to modify standard and characteristics of the product without any warning. The information contained herein is to the best of our knowledge accurate, but since the circumstances and conditions in which it may be used are beyond our control, we do not accept any liability for any loss or damage, however arising, which results directly or indirectly from the use of such information nor do we offer any warranty or immunity against patent infringement.

Maccaferri, Inc. Headquarters
10303 Governor Lane Blvd., Williamsport, MD 21795
Tel: (800) 638-7744 - Fax: (301) 223-4590
E-mail: info@maccaferri-usa.com www.maccaferri.com/us

Maccaferri operates under strict quality assurance and management procedures. Please visit the website of your local subsidiary for details of their Certifications.