

**N837 YVOIR**  
**YVOIR, WALLONIA, BELGIUM****Reinforced Soil Walls and Slope Reinforcement****Problem**

The big displacements that occurred along the road N837 in the municipality of Yvoir, province of Namur (Wallonia, Belgium), required the reconstruction of both sides of the road embankment. The customer SPW asked for the support of Maccaferri through the local partner Texion Geosynthetics NV to design the new reinforced embankment.

**Solution**

The choice of Green Terramesh was very well appreciated because of the environmental friendliness and the ease of construction. Moreover, geogrids (ParaGrid 50) were laid through every Terramesh layer to increase the internal stability of the road embankment.

The construction phase took approximately one month.

**Client:** Texion Geosynthetics NV

**Designer / Consultant:** SPW

**Contractor:** NONET

**Products used (Qty.)**

- ParaGrid	2.300 sqm
- Terramesh	150 units of Green Terramesh

**Date of construction:** 03/2019 - 04/2019



Previous situation



Construction phase: top view detail



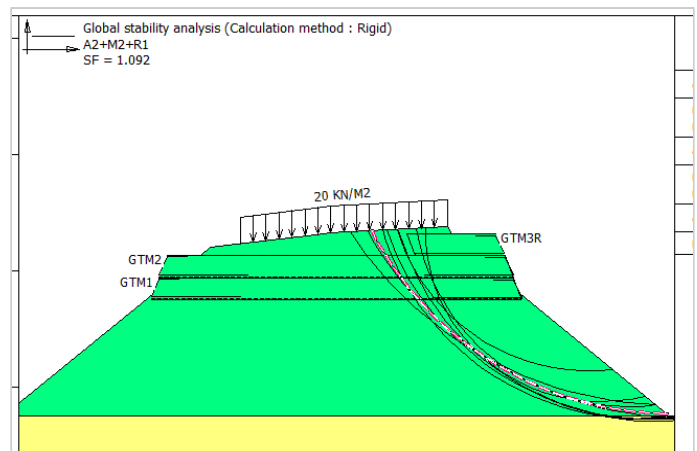
Construction phase: side view detail



Construction phase: installation of Terramesh units



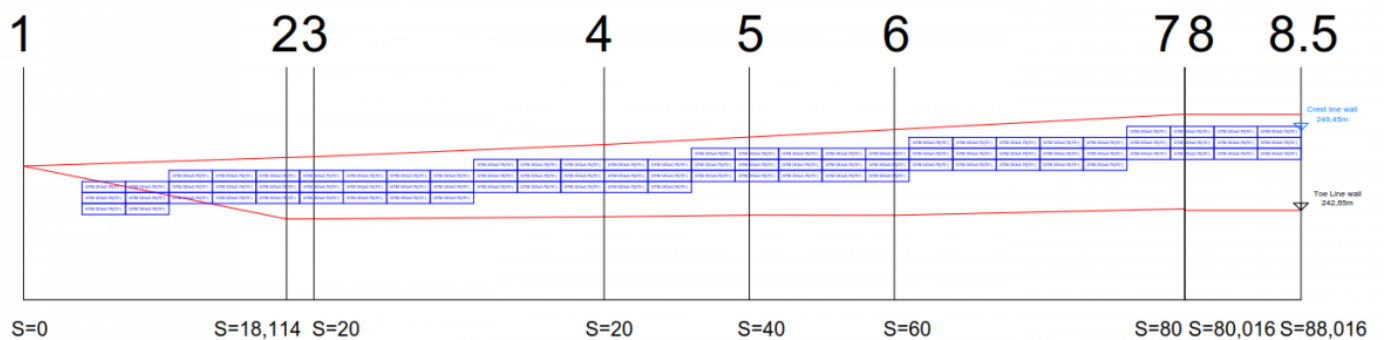
Construction phase: side view detail



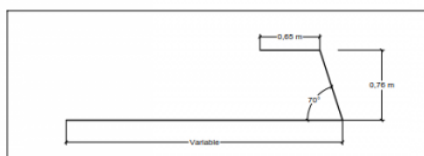
Maccaferri's pre-checks

they must be intended as a general indication to suggest the proper use of its products.

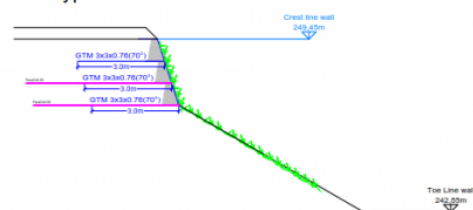
Right side embankment



Typical Dimension of Green Terramesh elements



Profil 8 Right  
Typical Section



Design phase: front view

Maccaferri Balkans Sh. P. k.  
Autostrada DR-TR; KM 6, SH2, Xhafzotaj, Durrës, Albania

E-mail: [info@al.maccaferri.com](mailto:info@al.maccaferri.com)