

GAS LINE PROTECTION, ELETTRA & FAUZIA PROJECT
RAVENNA, ITALY

PIPELINE PROTECTION

Product: SARMAC® T, MacBags®

Problem

Elettra and Fauzia are new gas platforms located in the Northern Adriatic Sea, which were to be incorporated in the wider context of gas field development in the Adriatic Sea by means of connection pipelines. The platforms are unmanned with three deck levels.

Elettra is to be located at approximately 57km from the Italian coast adjacent to Ancona, in a water depth of 78m. Offshore facilities will be connected by a new 8” gas export pipeline linking the new Elettra platform with a tie-in to the existing 24” sealine (Bonaccia – Calpurnia –Barbara C).

Fauzia is to be located at approximately 45km from the Italian coast, also adjacent to Ancona, in a water depth of 70m. These offshore facilities will be connected by a new 12” gas pipeline connecting the Fauzia platform to the existing Barbara B platform.

Solution

In order to stabilize and protect the new pipelines installed between the platforms, Saipem designed the use of SARMAC® T bituminous mattresses to protect the pipelines and pre-filled MacBags® to support the pipelines over depressions in the sea-bed and avoiding free-spans.

Both products are well known solutions within Maccaferri's off-shore portfolio and have been used in numerous projects.

SARMAC® T mattresses are designed to ballast and protect pipelines against falling objects as per DNV standards. The MacBags® were designed with a specific dry mix of sand and cement, that reacts only once installed underwater. This enables the bag to remain flexible during installation to conform to the sea-bed topography to provide support to the pipelines and thereby prevent the free-span of the new pipes.

Maccaferri supplied:

- 23 No. SARMAC® T of dimensions 6.00x.2.35x0.30m
- 2300 MacBag® units of dimensions 0.40x0.70m (total 30m³) prefilled with sand-cement mixture
- Automatic lifting frame for off shore operations and mattress installation

Client:

ENI

Main contractor:

SAIPEM MEDITERRANEAN SERVICES

Designer:

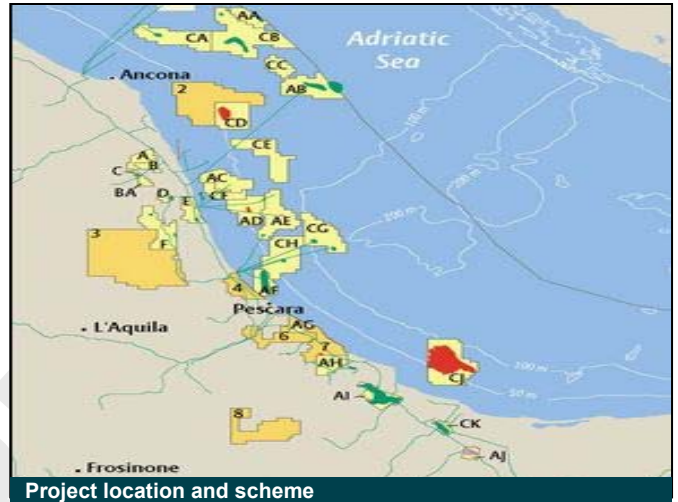
SAIPEM MEDITERRANEAN SERVICES

Products used:

SARMAC T MATTRESSES, PREFILLED MACBAGS

Date of construction

Summer 2014



Project location and scheme



Sarmac® T units ready for transportation



MacBag® units prior to filling

© 2015 Maccaferri. All rights reserved. Maccaferri will enforce Copyright.

Officine Maccaferri S.p.A. Global Headquarters

Via JF Kennedy 10, 40069 Zola Predosa (BO) - Italy

T: (+39) 051 6436000 F: (+39) 051 643 6201

E: info@hq.maccaferri.com

www.maccaferri.com

Maccaferri operates under strict quality assurance and management procedures. Please visit the website of your local subsidiary for details of their Certifications.