

BEAVERNETTING EVERTSOORD
EVERTSOORD, LIMBURG, NETHERLANDS

Slope Protection

Problem

A thriving beaver population is threatening the stability of the Netherlands' sea defences. The Mammal Society has brought together other wildlife groups to work out how to protect these important water-blocking dykes from the small but potentially destructive semi-aquatic rodents. Beavers play an important ecological role in the Netherlands and were initially brought in to increase biodiversity.

The beaver-breeding program began in 1988, and since then the beaver population has grown exponentially. There are now an estimated 700 beavers residing in the country's streams and canals. Triumphant mating habits combined with the beavers' ability to breed so successfully in the Dutch countryside mean they have been moving beyond the southern province of Limburg and entering towns and cities that may not be prepared for the influx. With the Dutch beaver population expected to hit around 7,000 by 2032, the need to take pre-emptive action is now a very important theme.

Solution

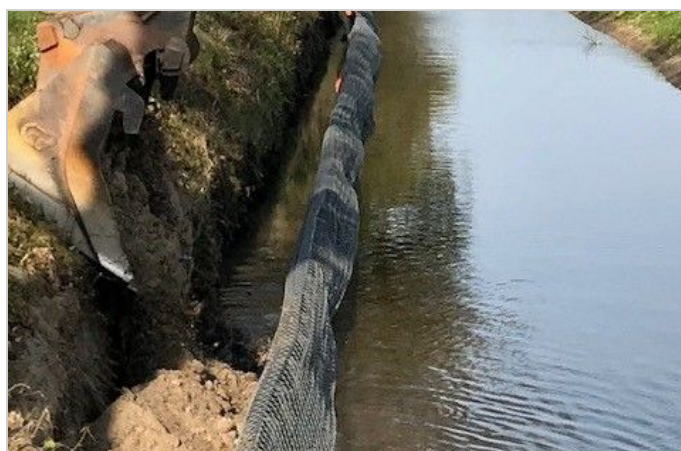
The company Texion Geosynthetics NV, partner of Maccaferri for the BeNeLux market, provided full assistance, proposing a solution with the so-called "beaver-netting". the product is made of heavy galvanized double twisted netting with an additional polymer coating to assure durability of 120 years in a C5 environment (according to EN10223-3). This product is already largely used for protecting the environment against borrowing animals like beavers and boars. In total 1.100 sqm of DT Netting, mesh 6x8, steelwire 2,2mm and PoliMac coating were successfully installed.

Client: Texion Geosynthetics NV**Designer / Consultant:** Waterschap Limburg**Contractor:** Wetering**Products used (Qty.)**

- DT Mesh

1.100 sqm
DTNET 6X8
Polimac**Date of construction:** 06/2021 - 06/2021

DT Polimac rolls delivered to the jobsite



DT Netting as vertical barrier



Lateral view of the slope



Detail of the installation phase



Detail of the installation phase



Overview of the canal



End of installation

Maccaferri Balkans Sh. P. k.
Autostrada DR-TR; KM 6, SH2, Xhafzotaj, Durrës, Albania

E-mail: info@al.maccaferri.com